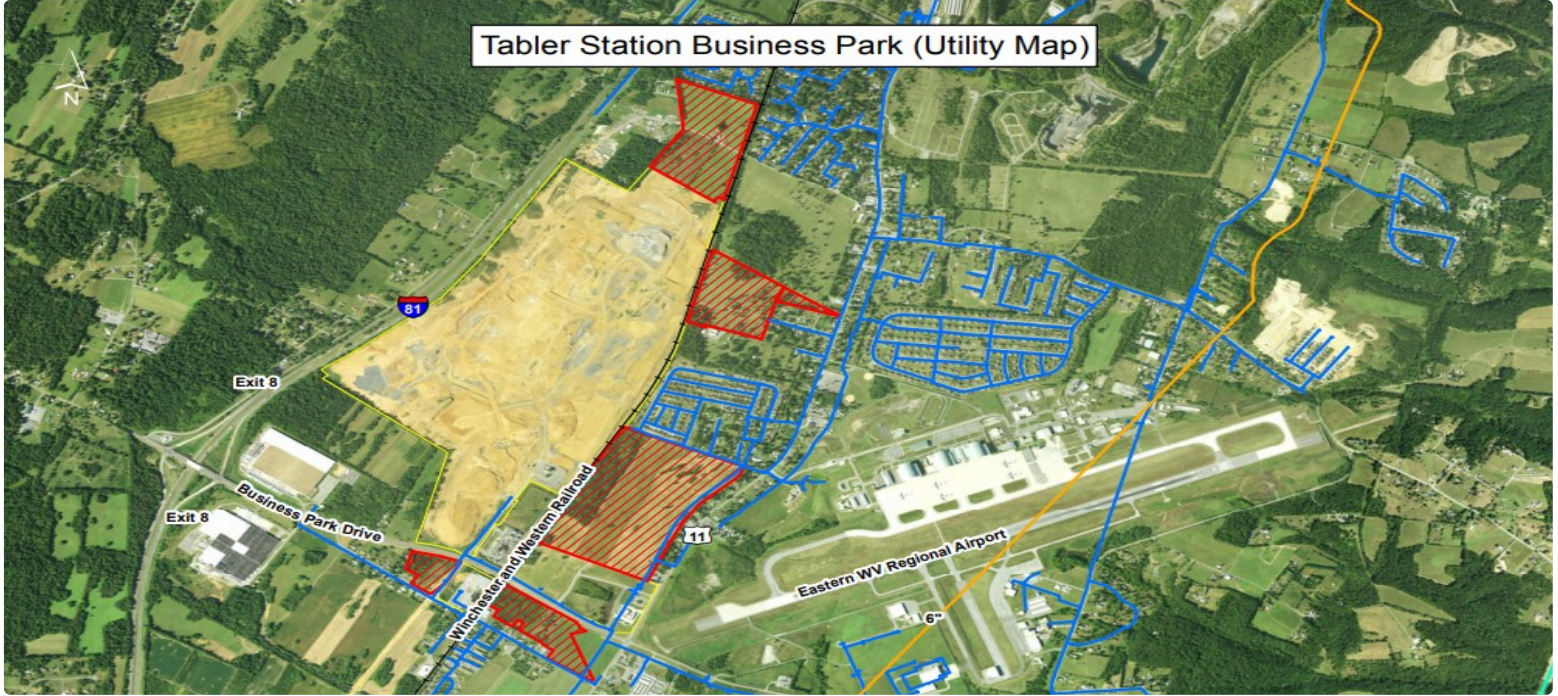


TABLER STATION BUSINESS PARK

BUSINESS PARK DRIVE | INWOOD, WV 25428



PROPERTY HIGHLIGHTS

A site selector's dream!

Commercial opportunity located in the epicenter of growth and development, with immediate access to Interstate 81, rail access and the Eastern WV Regional Airport nearby. Exit 5, I-81; Maximum highway frontage and exposure; Easy access to interstate ramps.

Tax Parcel ID:	Map15, Parcel 2
Acreage:	96.9 acres
Zoning:	Industrial/Commercial
Electric:	Potomac Edison
Natural Gas:	Mountaineer Gas Company
Water:	Berkeley County Public Sewer District
Highway:	Access via Exit, Exit 8 .5 mile
Commercial Airport:	Washington Dulles International
Rail:	Winchester & Western
Telecom:	Frontier
Broadband:	Yes



**DEVELOPMENT
AUTHORITY**
OF BERKELEY COUNTY

SANDY HAMILTON > Executive Director
shamilton@developmentauthority.com
304-267-4144 | www.developmentauthority.com